

绸丽

CHOU LI

丝绸般的柔软

Silky touch

绸丽是由 1.0T 以下的超细纤维构成，是具有非常柔软的触感素材。

另外，因为采用了比重较轻的素材，所以具有轻量感。

CHOU LI is an extremely soft material with a very soft, pleasant feel that is made from microfiber with a fineness of 1.0 dtex or less. Using this low-specific-gravity material produces a lightweight feel.

「绸丽」的特征 Features of CHOU LI

柔软手感
Soft Texture

因为由 1.0T 以下的极细纤维构成，所以触感变得极其柔软。
Very soft feel, made from microfiber with a fineness of 1.0 dtex or less.

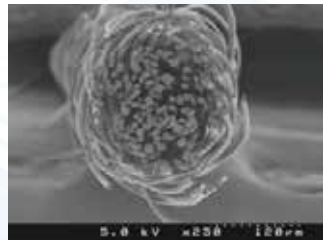
温感
Warm

因为由素材和纱线构成所以具有优越的保温性。
The acrylic fiber offers superb heat retention.

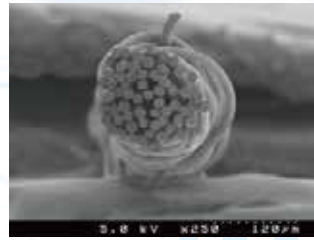
不粘身
Doesn't Get Clammy

具备超细纤维束所具有的毛细管现象，因此不粘身。
The bundle of microfibers uses capillary action to reduce clinging.

「绸丽」和一般素材的纱线断面比较 Cross-sectional comparison of CHOU LI and ordinary yarn



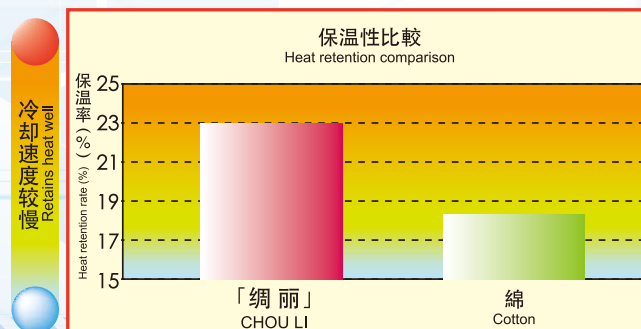
绸丽
CHOU LI



一般素材
Ordinary yarn

「绸丽」和棉的面料的保温性比较 Heat retention comparison between CHOU LI and cotton fabric

测定方法：サーモラボ II
Measurement: Thermo Lab II, dry contact method



「绸丽」使用罗纹组织
克重：130g/㎡
Half milano rib structure using CHOU LI
Unit weight: 130 g/m²

「棉」使用罗纹组织
克重：130g/㎡
Half milano rib structure using cotton
Unit weight: 130 g/m²

* 上記数据是根据特定的企划面料得出的结果，不是保证值。

Note: The above data are evaluation results based on specific fabric standards and are not guaranteed values.